

# Pole Top Cover

**Safety Certification : 14-AV2BN-0005**



## PICTURES

- USE : To the insulation protection of the long pole circumference by the conventional pole cover, the complete protection of the end portion of the pole where the new pole comes into contact and fixing or supporting the existing pole cover to the pole.
- SIZE : Height 400mm x Diameter 210mm
- TYPE : CLASS 3, **Use Voltage 26.5kV, Dielectric Strength 45kV**
- CONTENTS :
  - Protects all types of concrete poles
  - Excellent electrical insulation [45,000V withstand voltage test passed]
  - HOOK on the side, it can be fixed with existing pole cover, excellent workability
  - It is possible to fix the insulation rope through the upper protruding collar, thus enabling the pole cover to move up and down.

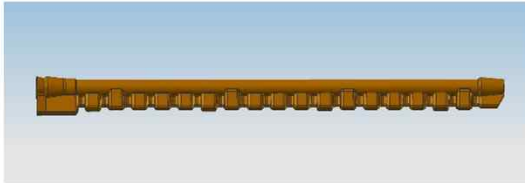


## SITE INSTALLATION

# 전선덮개 / Conductor Cover

Safety Certification 11-AV2BN-0002

## 1. Conductor Cover (NEW)



### ● USE

- Insulation cover used for electric wires to prevent any safety accidents when the operator touches the wires
- High-pressure supplier essential equipment (16 per company)

### ● SIZE : O.D 86mm X L 1,520mm

### ● TYPE : CLASS 3, 26.5kV

### ● NOTE

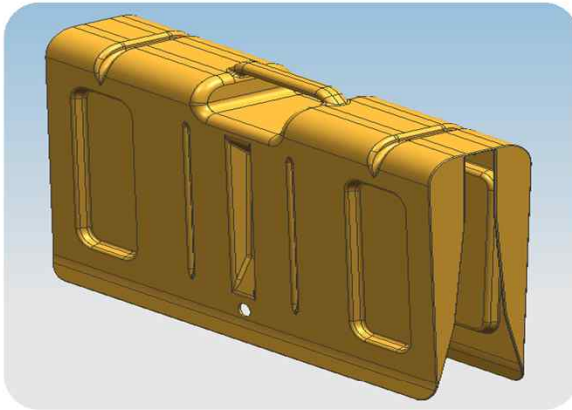
- Excellent removability during live wire work (soft material application, detachable optimum design)
- Designed for excellent resilience (HDPE material)
- Dead end cover and insulator cover interchangeable



[Installation Site]

# COS(Cut-out Switch) Cover

**Safety Certification : 12-AV2BN-0015**



## PICTURES

- **Use :** Replacement of COS and transformer primary lead wires to distribution lines below 23kV. It is possible to prevent contact with the operator's COS at the time of work, Installed in locations where there is a risk of electric shock due to line contact.
- **Size :** Height 450mm x Length 730 mm x Width 150mm
- **Type :** CLASS 3, 26.5kV
- **Contents :**
  - Full protection and installation of all COS standards (polymer COS)
  - Creates left and right wings to block leakage current from charging area
  - Handle instead of indirect work adapter for workability
  - Superior electrical insulation, flexible and high mechanical strength



**SITE INSTALLATION**



# Cross Arm Cover

Safety Certification 11-AV2BN-0001



Site Installation

- **Use** : Apparatus to cover the cross arm to prevent the contact with the cross arm when installing or removing binding wires in Live-Wire work

Required equipment for high-tension work subcontractor  
[4 units per subcontractor]

- **Size** : External Diameter 205mm X Length 560mm

- **Type** : 3class, 26.5kV

- **Standard**

Test Voltage : Insulation Strength 24.0kv, Dielectric Strength 25.0kv



Entire Product Assembled

# 45kV Insulation hose for Construction Connector

Safety Certification : 14-AV2BN-0003



*Picture*



*Site Installation*

- Use : To prevent accidents caused by contact with processing power lines of 45kV or less Protection to combine construction cover and insulator cover (dead end cover) Pipe connector
- SIZE : D.O. 134mm X LENGTH 234mm
- TYPE : CLASS 3, 26.5kV
- Test Voltage : Insulation Strength 24.0kv, Dielectric Strength 25.0kv
- Contents :
  - 25kV construction cover & 45kV construction cover compatible
  - Application of TPE material which is flexible and can withstand high temperature (150 °C)
  - Compatible with import, domestic insulator cover, dead end cover

# Insulator Cover

Safety Certification 11-AV2BN-0005



Site Installation

- **Use :** To protect the charging unit in pin insulator and LP insulator on the overhead electric line of 23kV and less. Required equipment for high tension work subcontractor (8 units per subcontractor)
- **Size :** External Diameter 220mm X Length 946mm
- **Type :** 3class, 26.5kV
- **Standard :**

Test Voltage: Insulation Strength 24.0kV, Dielectric Strength 25.0kV

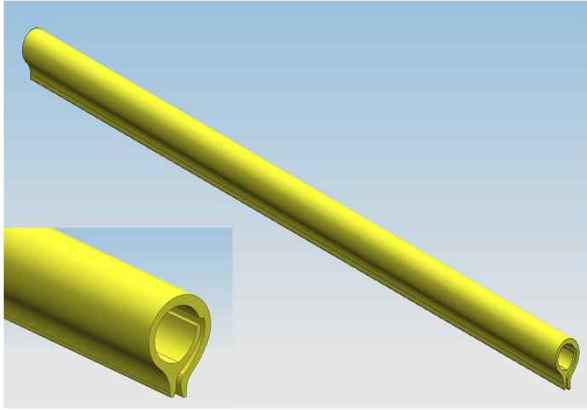


Entire Product Assembled



# 45kV LINE HOSE(선로호스)

**Safety Certification : 14-AV2BN-0006**

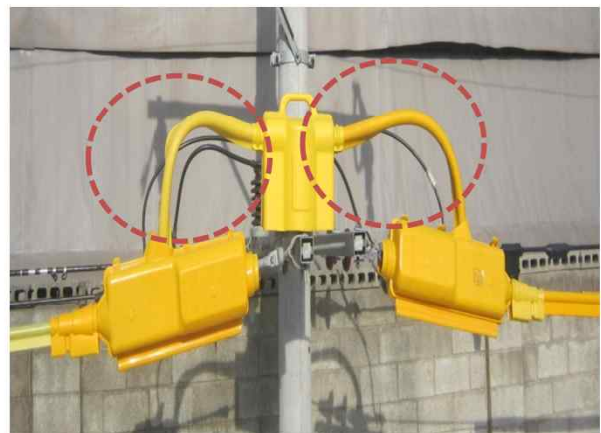


*PICTURES*



*SITE INSTALLATION*

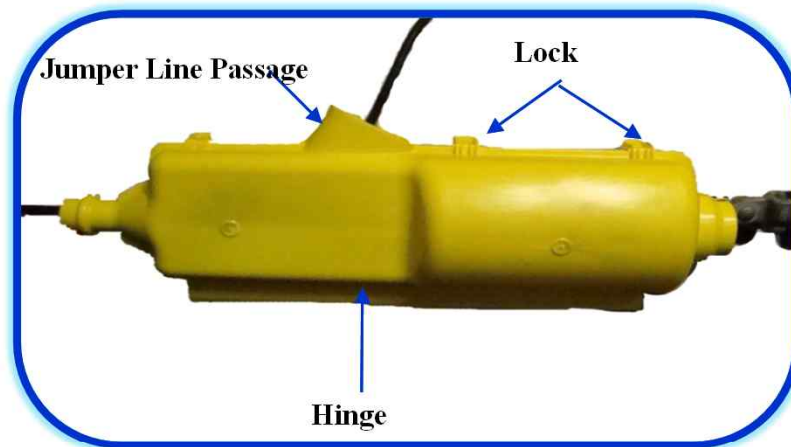
- Use : Damage to electric shock or line due to approach or contact with power distribution line. An insulation guard, which temporarily installs in dangerous places,
- Size : I.D. 38mm x Length 2,000mm
- Type : CLASS 3, Use Voltage 26.5kV, Dielectric Strength 45kV
- Contents :
  - TPE material flexible and withstand high temperature (150 °C)
  - It can be mounted on all standard wire.
  - Excellent electrical insulation (45kV withstand V test passed)
  - 22.9kV-y Protection of curved parts such as jumper wire, transformer lead wire, etc.



*SITE INSTALLATION*

# Multi-Purpose Dead End Cover

Safety Certification 11-AV2BN-0006

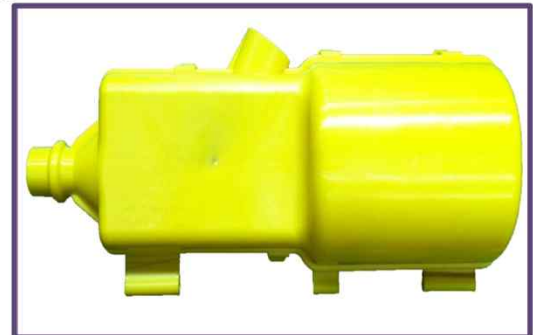
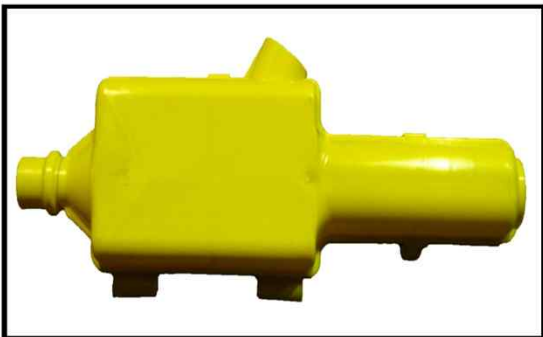


◉ **Use:** Multi-purpose dead end cover for Live-Wire work, commonly used for both porcelain and polymer suspension insulator, to protect the charging unit in suspension insulator and dead end clamp (including insulating cover)  
Required equipment for high-tension work subcontractor (12 units per subcontractor)

◉ **Type :** 3class, 26.5kv

◉ **Standard :** Test Voltage: Insulation Strength 24.0kv, Dielectric Strength 25.0kv

◉ **Size :** External Diameter 220mm X Length 946mm



Polymer Insulator



Porcelain Insulator



**Applicable for both**  
polymer insulator and  
porcelain insulator to  
protect the entire  
charging unit  
completely





# POLE COVER

**Safety Certification : 16-AV2BN-0001**



## *PICTURES*

- **Use:** The insulation cover, which is installed in the place of pole during the entry into the distribution line and replacement of the pole to prevent the worker's approach or electric shock due to line contact.
- **Type :** CLASS 3, 26.5kV
- **Size :** I.D. 250mm x Length 1,710mm
- **Contents :**
  - In order to improve the workability during the occupancy work,
  - Easy to slide up and down after mounting on pole
  - Superior electrical insulation, flexible and high mechanical strength
  - Excellent in elasticity and easy to install on pole.

# 45kV INSULATOR COVER FOR CONSTRUCTION

Safety Certification 15-AV2BN-0001



● **Use** : It protects the danger of electric shock due to the contact of the worker on the line port fastening area which supports the working wire in the distribution line in the construction or electric work, and the equipment from the foreign body contact such as fine dust or alga. It is a construction protection for private use only for long term protection.

● **Size** : Height 530mm x O.D. 220

● **Type** : CLASS 3, Use Voltage 26.5kV, Test Voltage 45kV

● **Contents** :

- Protective cover that can protect the live parts directly and can be installed for a long time
- Excellent electrical insulation (45,000V withstand voltage test passed)
- Acquired flame retardant V-0 rating
- Material that can withstand temperatures over 150 °C (TPE)
- Complete interception design of fauna such as algae
- Prevent the fallout from natural disasters



*Product Picture*



*Site Installation*

# 45kV LA COVER FOR CONSTRUCTION

Safety Certification 15-AV2BN-0003



● **Use** : In LA (lightning arresters) that support the working wires in the construction distribution lines during construction or electrical work, the risk of electric shock from contact with the worker is prevented and the equipment is protected for a long period of time from contact with extraneous materials such as fine dusts and algae

● **Size** : Height 460mm x O.D. 140

● **Type** : CLASS 3, Use Voltage 26.5kV, Test Voltage 45kV

● **Contents** :

- Can protect the live part directly and can be installed for a long time
- Excellent electrical insulation (45,000V withstand voltage test passed)
- Acquired flame retardant V-0 rating
- Material that can withstand temperatures over 150 °C (TPE)
- Complete interception design of fauna such as algae
- Prevent the fallout from natural disasters such as typhoons by installing locks.



*Product Picture*



*Site Installation*



# 45kV COS COVER FOR CONSTRUCTION

Safety Certification 15-AV2BN-0004



● **Use** : Prevent the risk of electric shock due to the contact of the operator on the COS of the distribution line or the first and second lead wires of the transmission line during the construction or electrical construction, to prevent the electric shock of the COS from the contact with extraneous materials such as fine dusts and algae.

● **Size** : Height 720mm x Width 360mm

● **Type** : CLASS 3, Use Voltage 26.5kV, Test Voltage 45kV

● **Contents** :

- Excellent electrical insulation (45,000V withstanding voltage test passed)
- Acquired flame retardant V-0 rating
- Material that can withstand temperatures over 150 °C (TPE)
- Complete interception design of fauna such as algae
- Prevent the fallout from natural disasters such as typhoons by installing locks.



*Product Picture*



*Site Installation*

# 45kV Dead-End COVER FOR CONSTRUCTION

Safety Certification 15-AV2BN-0002



●Use : : Prevent the risk of electric shock due to the contact of the operator to the live part of the wire connection and the live part of the human clamp during the construction or the electric work, and to protect the equipment from prolonged contact with extraneous materials such as fine dusts and algae.

●Size: Height 950mm x Width 210mm

●Type : CLASS 3, Use Voltage 26.5kV, Test Voltage 45kV

●Contents :

- Excellent electrical insulation (45,000V withstand voltage test passed)
- Acquired flame retardant V-0 rating
- Material that can withstand temperatures over 150 °C (TPE)
- Complete interception design of fauna such as algae
- Prevent the fallout from natural disasters such as typhoons by installing locks.



*Product Picture*



*Site Installation*

# 45kV Cross-Arm COVER FOR CONSTRUCTION

Safety Certification 15-AV2BN-0005



●Use : In the construction or electric work, the electric shock hazard caused by the contact of the worker is avoided at the live part of the wire connection and the live part of the human clamp and the equipment is protected for a long period of time from the contact with extraneous materials such as fine dust and algae.

●Size : Height 950mm x Width 210mm

●Type : CLASS 3 , Use Voltage 26.5kV, Test Voltage 45kV

●Contents :

- Excellent electrical insulation (45,000V withstand voltage test passed)
- Acquired flame retardant V-0 rating
- Material that can withstand temperatures over 150 °C (TPE)
- Complete interception design of fauna such as algae
- Locking device prevents natural disasters such as typhoons from falling out



*Product Picture*



*Site Installation*



# Transformer Device for non-blackout construction

Patent 0359402

## 제품특징 및 장점

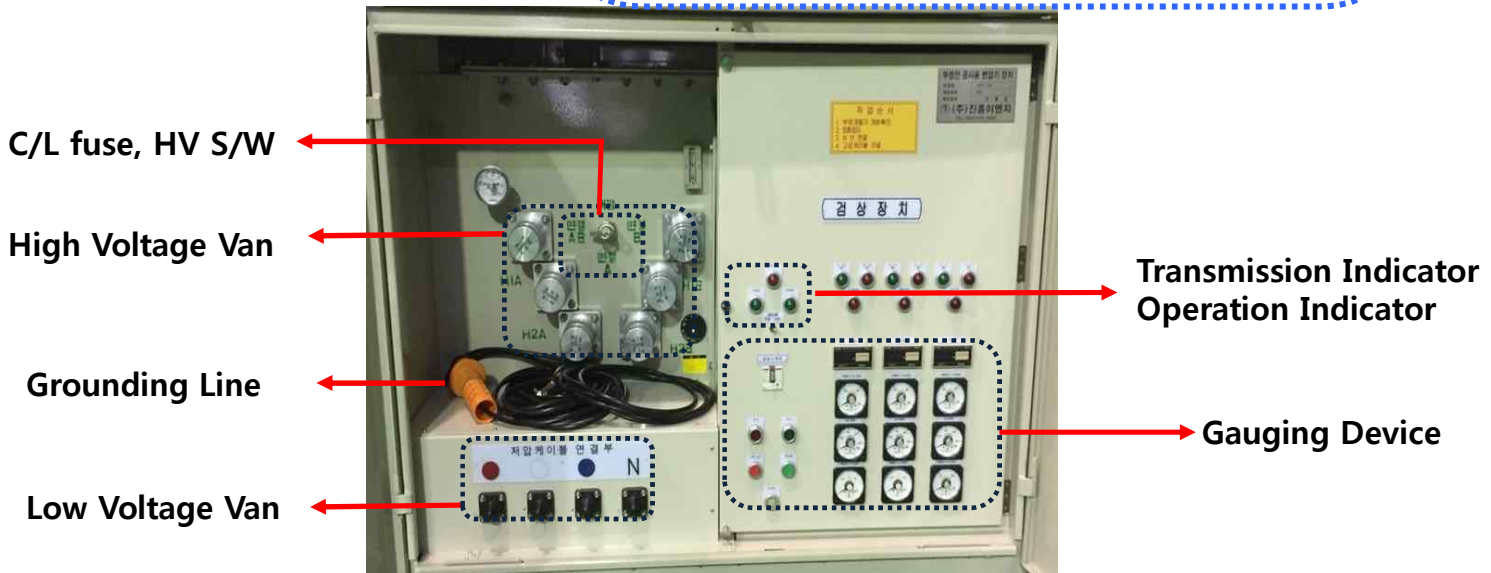
- Can only be mounted on 1.2 ton truck
- Bypass opening / closing function added
- Mobility and workability
- All live parts are perfectly insulated
- Built-in high-voltage switch
- 43 wiring (three phase), 13 wiring (single phase) only
- Suppression and alarm function when parallel operation condition is not correct (gauging device)
- Automotive terminal function in overcurrent

## Model : JHT-25

Type : 22.9kV-y/400-230V

Size : 1500 x 1250 x 1400

Weight : 1,600kg



**3Ø300KVA**



3Ø300KVA TR Device on the 1.2ton Truck



글로벌 기술을 리드하는 강한 기업

**(주)진흥이엔지**

<http://www.jhe.kr>

TEL. 055-324-3000  
FAX. 055-324-3001

- 품질경영 시스템인증 : ISO 9001 / ISO 14001
- 환경경영 시스템인증 : KSA 14001 : 2004 / ISO 14001 : 2004
- 기업부설 연구소 제2010310395호
- 방호장치 제조업체(한국산업안전보건공단) 제96호