



**JIN HUNG ENG. CO., LTD.**

<http://www.jhe.kr/>



# **JIN HEUNG ENG**

## **PRODUCT CATALOGUE**

LEADER OF NON-INTERRUPTION, CONSTRUCTION EQUIPMENT

Head Office : 29-1, Gwanghaebyeon-ro, Suyeong-gu, Busan, Republic of Korea

Factory : 20-6, Seobu-ro 396beon-gil, Jinyeong-eup, Gimhae-si, Gyeongsangnam-do, Republic of Korea

T. +82-55-324-3000 F. +82-55-324-3001 E. [jh3000@hanmail.net](mailto:jh3000@hanmail.net)



# A leader in uninterruptible construction equipment

## This is JINHEUNG ENG

I'd like to give my sincere respect and gratitude for your hard works at the forefront of electricity industry. Employees and executives of JINHEUNG Co., Ltd., have committed to conducting constant researches and making endless efforts to develop electricity industry based on our several years of experiences in work sites.

JINHEUNG has continuously made a sustainable growth, concentrating on transparent ethical management and customer satisfaction.

Both the employee and the executive, with our rich experiences, make the utmost efforts to meet customer satisfaction on service, based on the principle of detailed examination and accurate judgment.

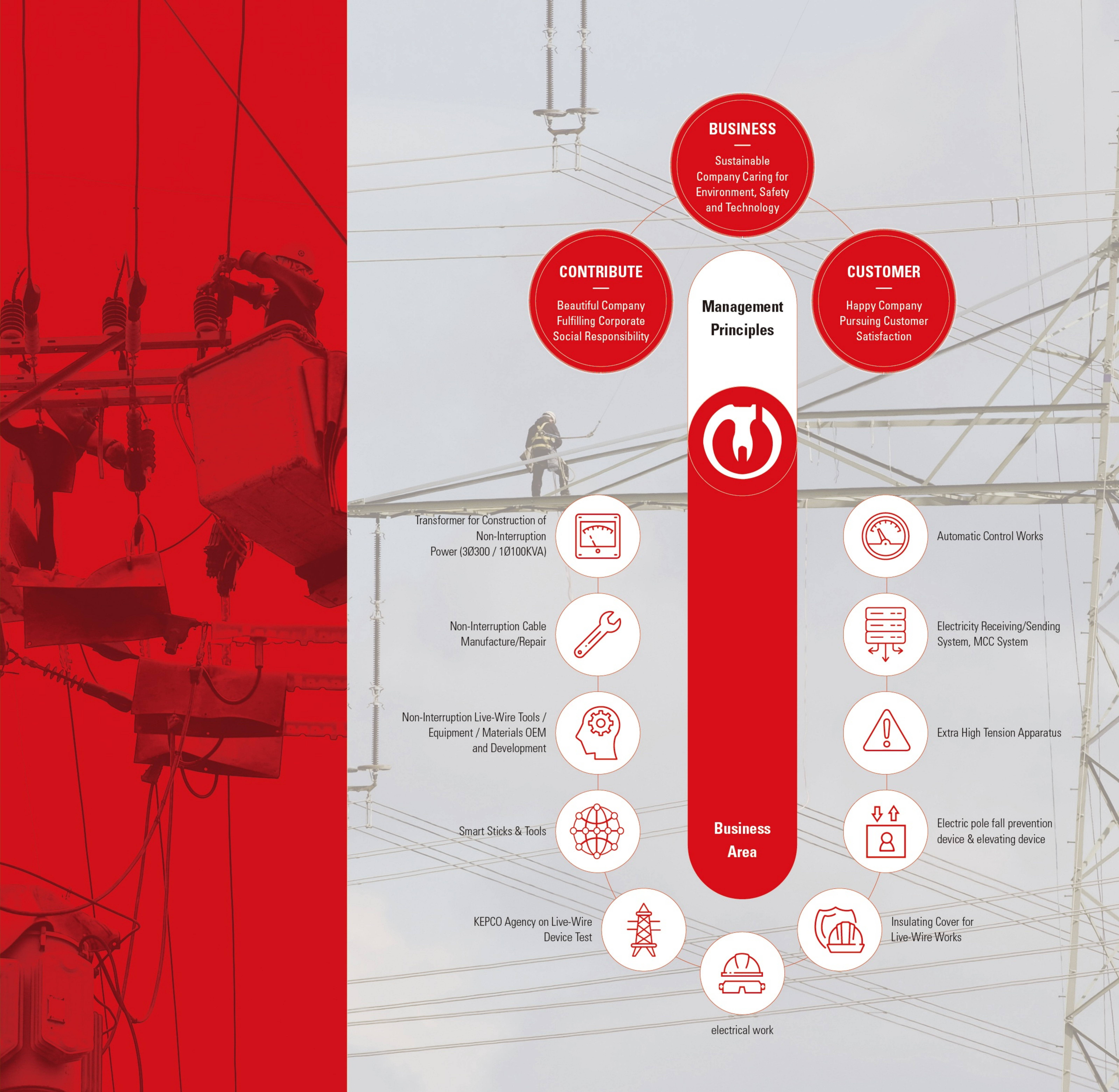
To deeply touch your heart with our service, JINHEUNG will do our best to grow as a world-class company by improving our competence.

Your constant interest and support is greatly appreciated.

Thank you.

### HISTORY

- 1991
- Founded Jin Hung Engineering
- 2003
- Established the Corporation  
(Changed the Name to Jin Hung ENG. Co., Ltd.)
- 2009
- Evaluated for Protection Device Technology and Production System  
Evaluation Approved by KOSHA
- 2010
- Quality Management System Certificate (ISO 9001:2008/KSA 9001:2009)  
• Environmental Management System Certificate (ISO 14001:2004/KSA14001:2009)  
• Establishment of affiliated research institute (NO.2010310395)
- 2011
- Registered as an uninterruptible power supply equipment and safety gear test inspection agency company  
• Registered as a manufacturer of protective devices for the Korea Occupational Safety and Health Agency
- 2015
- Registered as a venture company (NO.20150101559)
- 2016
- Successful localization of KEPCO essential equipment
- 2020
- BIXPO Small and Medium Cooperation R&D Competition Excellence Award





# Equipment and Apparatus for Non-Interruption Work

Transformer Device for non-blackout construction  
 Mobile Transformer Boom Lifter  
 Multipurpose power supply  
 Low voltage bypass cable device  
 Large cable drum unit  
 Small cable drum unit  
 Pole Fall Prevention Device - Fall Prevention Network  
 Pole Fall Prevention Device - Safety Mat  
 BY-COS Uninterruptible power supply for indirect work

## Transformer Device for non-blackout construction

| Patent 0359402

### Model : JHT-25

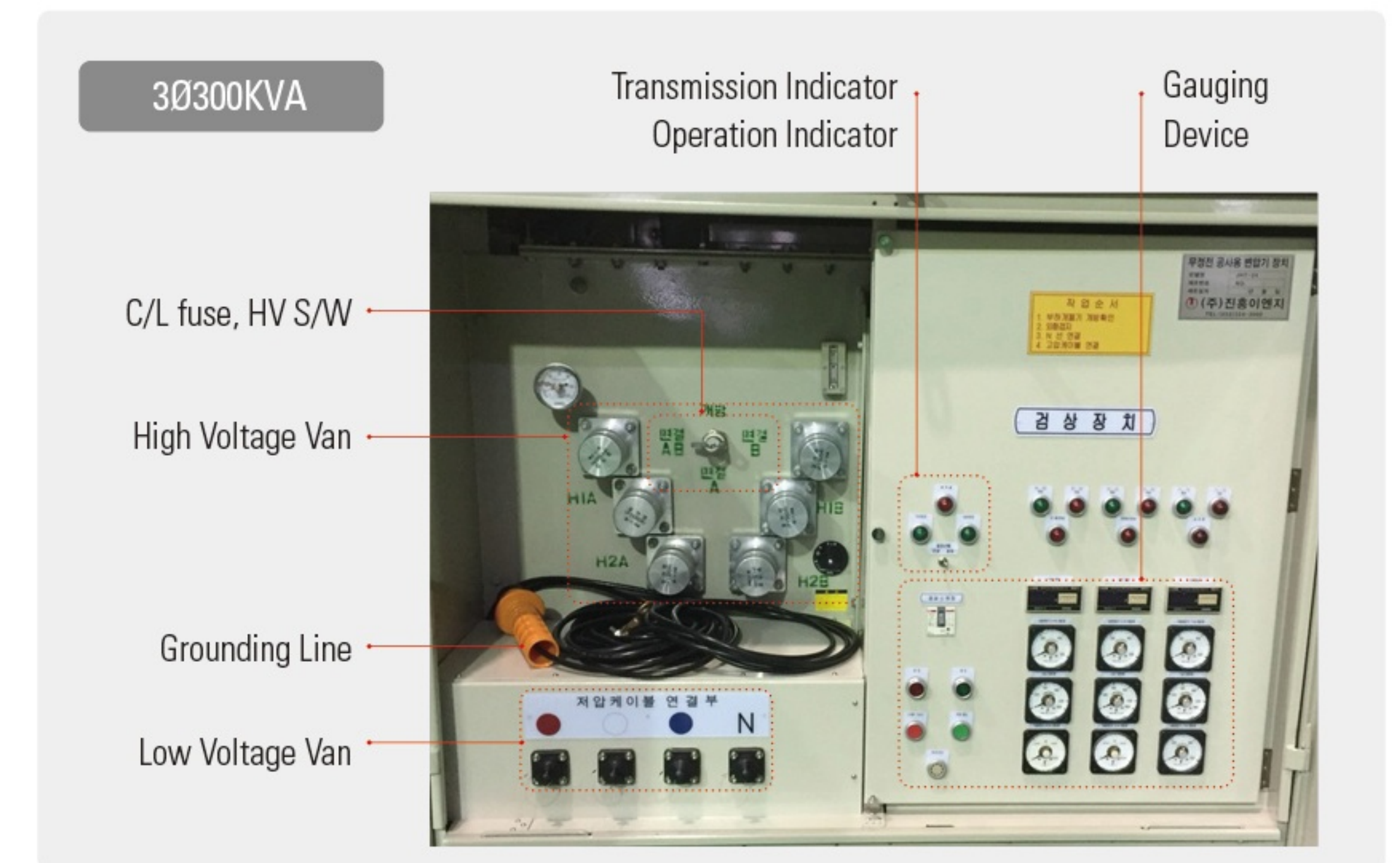
Type : 22.9kV-y/400-230V

Size : 1500 x 1250 x 1400

Weight : 1,600kg

### Product features

- Can only be mounted on 1.2 ton truck
- Bypass opening / closing function added
- Mobility and workability
- All live parts are perfectly insulated
- Built-in high-voltage switch
- 43 wiring (three phase), 13 wiring (single phase) only
- Suppression and alarm function when parallel operation condition is not correct (gauging device)
- Automotive terminal function in overcurrent.



3Ø300KVA TR Device on the 1.2ton Truck

## Mobile Transformer Boom Lifter

### Boom Lifter & Mobile Transformer on-board Truck

The boom leaf is installed on a truck of more than 2.5 tons and automatically raises the high-voltage cable or low-voltage cable by using a reel and installs it on the distribution line. It is operated by hydraulic pressure and easy to operate so safe work can be done.



3.5Ton Truck Mounted Transformer Unit &amp; Boom Lift



3.5Ton Chassis Cap Remodeling &amp; Transformer Boom Lifting Work Diagram



Multipurpose power supply



	Contents
Summary	Temporary power supply in case of abnormalities in the customer's power reception facilities such as flooding or malfunction of the power reception transformer by combining the Pad Tr, a repair material, and the developed product, a multi-purpose power supply device.
Configuration	<ul style="list-style-type: none"><li>• Base for Pad Tr</li><li>- Life and death display possible Built-in switch for 200A extra high voltage</li><li>- Built-in detection devices such as voltmeter, ammeter, phase measuring device, and weighing device</li><li>- Low voltage connection part 4 circuits and circuit breaker for each low voltage circuit (250A)</li><li>• An overhead/underground extra-high voltage cable that can be connected to an extra-high voltage power source</li><li>• Extendable low-voltage cable that can be connected to customer distribution boards, etc.</li></ul>
Uses	<ul style="list-style-type: none"><li>• Emergency power supply in case of flooding of the customer's power receiving facility or a breakdown of the power receiving transformer</li><li>- 30th floor ATP (based on 140 households) 3 buildings can be supplied (total of 420 households)</li></ul>

Low voltage bypass cable device

1. Low Voltage detection connection device



	Contents
Usage	In case of construction such as replacement of electric poles and transformers in a load-dense area where transformers are installed on every pole such as a city, connect the adjacent transformer with a low-voltage cable to the low-voltage connection device and the low-voltage connection.
Size	590mm X 490mm X 300mm
Weight	30kg
Specific ation	<ul style="list-style-type: none"><li>• Built-in 2 400A low voltage switchgear (ABS 403C-400A)</li><li>• Detection button function, LED lamp and buzzer sound in case of phase loss or abnormality</li><li>• KIV 35SQ-95SQ R/S/T/N 4 pcs can be connected (3WAY)</li></ul>

2. Low Voltage Connector



	Contents
Usage	<ul style="list-style-type: none"><li>• A low-voltage bypass connection device that can be used by connecting to each other when the low-voltage cable connected to the low-voltage line of the customer is short during uninterruptible construction using the low-voltage bypass device. (2WAY)</li><li>• Structure that does not fall out easily even when the installation tension of the low voltage cable is applied</li><li>• The straight junction box can be safely protected from storage and external impact, and R/S/T/N low-voltage cables can be connected in both directions.</li></ul>
Size	400mm X 300mm X 100mm
Weight	10kg

Large cable drum unit

| Generator type cable drum device (cable method)



Content	Specification
Size	2,500mm X 1,850mm X 1,850mm
Weight	1,500kg
Cable Load Capacity	Bypass Cable : <b>Total 900m</b> (Korea Construction Company Standard) 50m X 3ea = 150m / 100m X 3ea = 300m / 150m X 3ea = 450m
Drum Driver Method	<ul style="list-style-type: none"><li>• Generator &amp; Electric Motors, Reducers</li><li>• Winding and loosening of 1 side 3 drums (9 drums in total)</li><li>• Reverse rotation possible, speed acceleration</li><li>• Engine Soot External Ventilation System</li></ul>
Option	<ul style="list-style-type: none"><li>• Remote control included</li><li>• Including junction box and accessory storage box</li></ul>



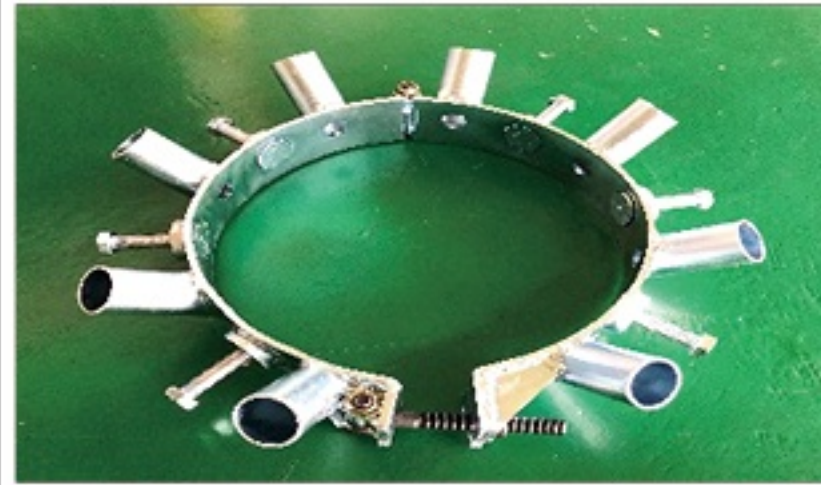


Small cable drum unit



Content	Specification
Size	2,500mm X 1,850mm X 1,850mm
Weight	1,500kg
Cable Load Capacity	Bypass Cable : <b>Total 900m</b> (Korea Construction Company Standard) 50m X 3ea = 150m 100m X 3ea = 300m 150m X 3ea = 450m
Drum Driver Method	<ul style="list-style-type: none"><li>• Generator &amp; Electric Motors, Reducers</li><li>• Winding and loosening of 1 side 3 drums (9 drums in total)</li><li>• Reverse rotation possible, speed acceleration</li><li>• Engine Soot External Ventilation System</li></ul>
Option	<ul style="list-style-type: none"><li>• Remote control included</li><li>• Including junction box and accessory storage box</li></ul>

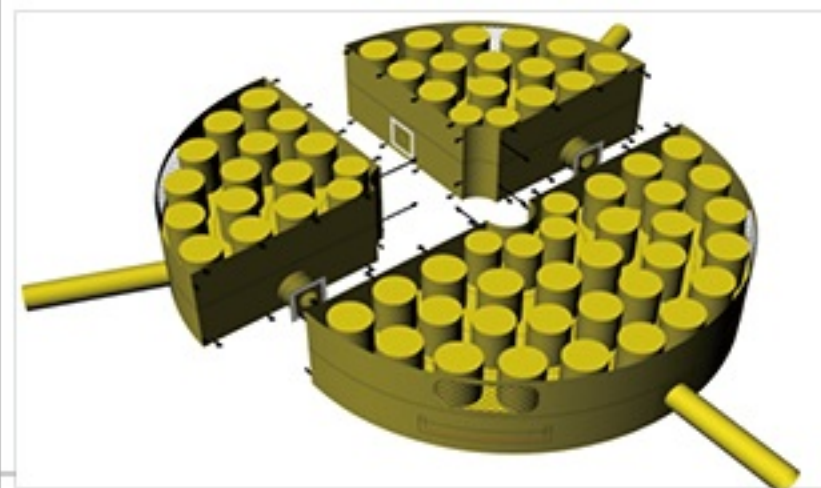




## Pole Fall Prevention Device - Fall Prevention Network

Division	Content	
Uses	After the operator boards at a height of 0~1.0m above the ground, the ground supervisor installs an integrated band and connects the support to form an umbrella-shaped fall prevention net. is a safety device for	
Size	Diameter 4.4M x Height 2.0M	
Weight	• Band: 9kg/set • Pipe : 5kg/set • Network : 12kg/set Total 60kg/set	
Components	Band	 <ul style="list-style-type: none"> <li>• Octagon, 750mm in width, 360mm in diameter, support can be installed in pin type</li> <li>• Compatible with all pole sizes (10m, 12m, 16m) (adjustable diameter)</li> </ul>
	Pipe	 <ul style="list-style-type: none"> <li>• Length 3.0m, diameter 32pi FRP rod (total 8)</li> <li>• Material: Insulation glass fiber reinforced plastic (USN E-glass) + painting</li> </ul>
	Network	 <ul style="list-style-type: none"> <li>• Applying a 2cm mesh, 3mm thick anti-falling net (Secure field of view)</li> </ul>



## Pole Fall Prevention Device - Safety Mat

Division	Content	
Uses	Two hemispherical mats are wrapped around the electric pole on the ground and firmly fixed with a link (installed in a hemispherical shape or a circle depending on the site conditions) so that the boarding worker falls due to the worker's carelessness, such as not fastening the safety belt rope, lack of concentration, or misunderstanding. It is a minimum safety device in case of an accident	
Size	Diameter 4.0m x Height 1.0m	
Weight	Half 26kg, Quater 13kg x 2ea	
Components	Mat	 <ul style="list-style-type: none"> <li>• 1M height, 2.0M radius 1 semicircle mat + 2 quadrant mats</li> <li>• Inside: 30 air rods installed (shock absorption)</li> </ul>
	DC Blower	 <p>Simultaneous injection of 3 mats with a dedicated DC battery-type blower (120V) Easily connect 3 safety mats to AIR VENT Air buffer time: within about 1 minute after injection</p>
	Material	 <ul style="list-style-type: none"> <li>• PVC TARPULIN MATERIAL</li> <li>• Thickness: 0.45MM</li> <li>• External treatment: UV Coating</li> </ul>



## BY-COS Uninterruptible power supply for indirect work

| KERI Test Complete

### Purpose

In an extra-high voltage (22.9kV-y) overhead distribution line, it is installed on the primary side of a pole transformer and used as a protection or switchgear of the transformer, or installed at the inlet of a high-voltage power reception facility to replace the fuse or check of the COS in an uninterrupted state with an indirect method. Uninterruptible COS fuse holder replacement equipment for work.

### Specifications and Specifications

Application range: Extra high voltage cutout switch 25.8kV, 81.4A

Material : Conductor part

Brass  
+  
silver

plating, Outer shell part

MC Nylon

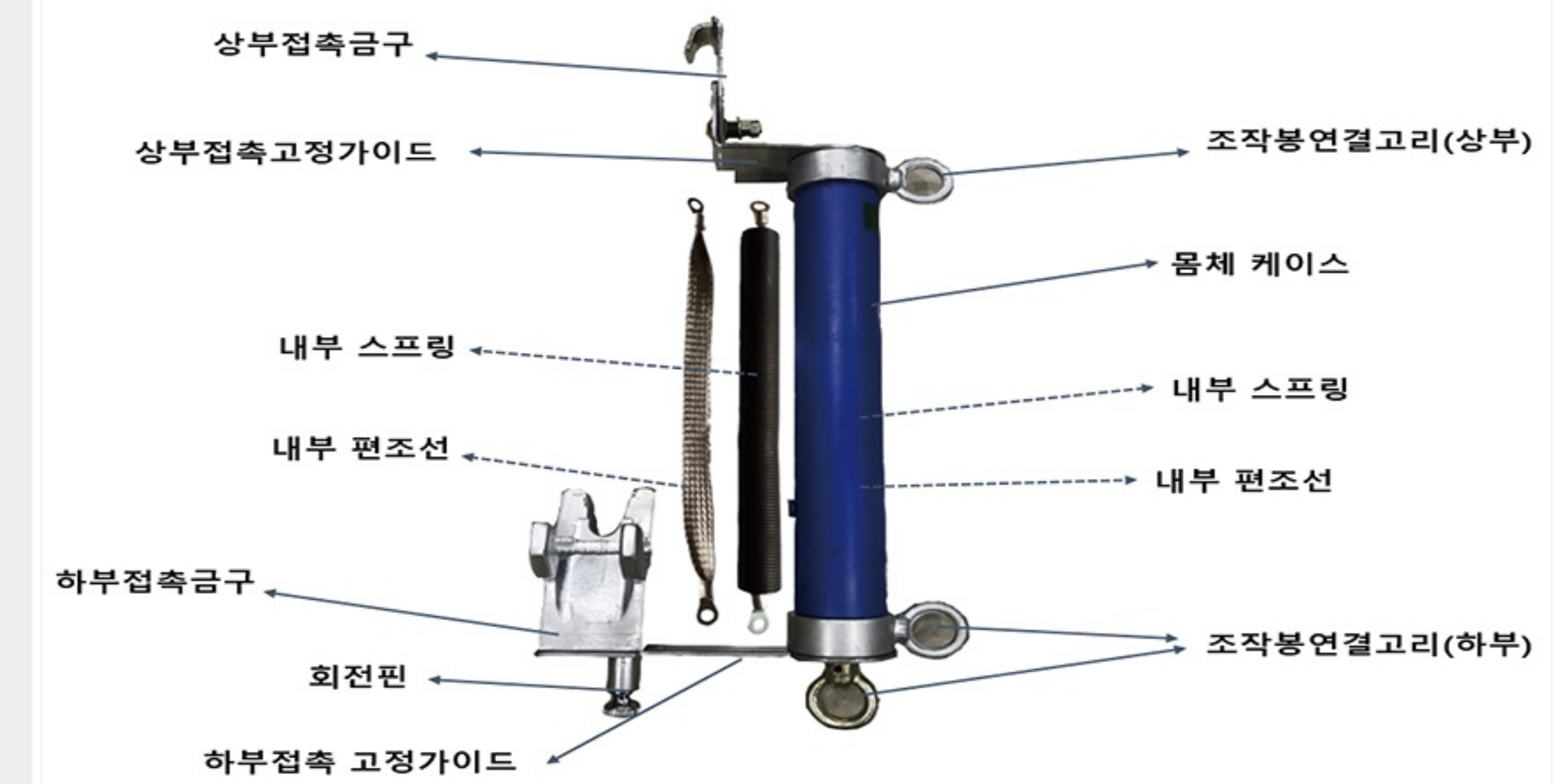
Rated voltage and rated current: 25.8kV, 81.4A

### Characteristic

- Securing safety by working with smart sticks (hand sticks, hot sticks)
- As indirect work, installation is easy and protection work is not required.
- All sizes can be installed on COS(polymer COS)
- Small and lightweight structure
- Optimal structure and excellent durability

### Applicable to




- Inspection and replacement of COS fuse link at the special high voltage power receiving facility
- The location where the contact with the upper part of the COS is fixed due to salt damage and moisture absorption is expected in the fuse holder
- Other necessary locations such as COS additional inspection points when checking pole transformers



BY-COS Component



Installing Site Picture

Division	Content	Pictures
Indirect By-COS	Cutout switch (COS) fuse for indirect work Holder uninterruptible inspection (replacement) equipment <ul style="list-style-type: none"> <li>• Weight: 1.8 kg or less</li> <li>• Length: 297~430mm</li> </ul>	
Test	Temperature rise test <ul style="list-style-type: none"> <li>• Test current 81.4A applied for 1 hour</li> <li>• Temperature rise and temperature permissible for each major area limit not exceeded</li> </ul>	
	Body case withstand voltage test <ul style="list-style-type: none"> <li>• 60Hz 42kV between terminal and ground in dry condition apply voltage for 1 minute</li> <li>• No flashover or insulation breakdown</li> </ul>	



# SAFETY DEVICE & COVER

## 45kV INSULATOR COVER FOR CONSTRUCTION

### 45kV LA COVER FOR CONSTRUCTION

### 45kV COS COVER FOR CONSTRUCTION

### 45kV Dead-End COVER FOR CONSTRUCTION

### 45kV Cross-Arm COVER FOR CONSTRUCTION

### Indirect COS Cover for Construction

### Indirect Insulator Cover for Construction

### Indirect Branch Cover for Construction

### Indirect Bushing Cover for Construction

### Indirect LA Cover for Construction

### Indirect Dead-End Cover A for Construction

### Indirect Bypass Cable Clamp Cover

### Indirect Joint Cable Head Cover for Construction

### Pole Top Cover

### Conductor Cover

### COS(Cut-out Switch) Cover

### Cross Arm Cover

### Insulation hose for Construction Connector

### Insulator Cover

### 45kV LINE HOSE

### Multi-Purpose Dead End Cover

### POLE COVER

### Rubber Insulating Blanket

### Insulation Hose for Construction

### Overhead earth wire Support Cover

### Poletype Transformer Bushing Cover

## 45kV INSULATOR COVER FOR CONSTRUCTION

| Safety Certification 15-AV2BN-0001



### Use

It protects the danger of electric shock due to the contact of the worker on the line port fastening area which supports the working wire in the distribution line in the construction or electric work, and the equipment from the foreign body contact such as fine dust or alga It is a construction protection for private use only for long term protection.

### Size

Height 530mm x O.D. 220

### Type

CLASS 3, Use Voltage 26.5kV, Test Voltage 45kV

### Contents

- Protective cover that can protect the live parts directly and can be installed for a long time
- Excellent electrical insulation (45,000V withstand voltage test passed)
- Acquired flame retardant V-0 rating
- Material that can withstand temperatures over 150°C (TPE)
- Complete interception design of fauna such as algae
- Prevent the fallout from natural disasters

## 45kV LA COVER FOR CONSTRUCTION

| Safety Certification 15-AV2BN-0003



### Use

In LA (lightning arresters) that support the working wires in the construction distribution lines during construction or electrical work, the risk of electric shock from contact with the worker is prevented and the equipment is protected for a long period of time from contact with extraneous materials such as fine dusts and algae

### Size

Height 460mm x O.D. 140

### Type

CLASS 3, Use Voltage 26.5kV, Test Voltage 45kV

### Contents

- Can protect the live part directly and can be installed for a long time
- Excellent electrical insulation (45,000V withstand voltage test passed)
- Acquired flame retardant V-0 rating
- Material that can withstand temperatures over 150°C (TPE)
- Complete interception design of fauna such as algae
- Prevent the fallout from natural disasters such as typhoons by installing locks.



## 45kV COS COVER FOR CONSTRUCTION

| Safety Certification 15-AV2BN-0004



## Use

Prevent the risk of electric shock due to the contact of the operator on the COS of the distribution line or the first and second lead wires of the transmission line during the construction or electrical construction, to prevent the electric shock of the COS from the contact with extraneous materials such as fine dusts and algae.

## Size

Height 720mm x Width 360mm

## Type

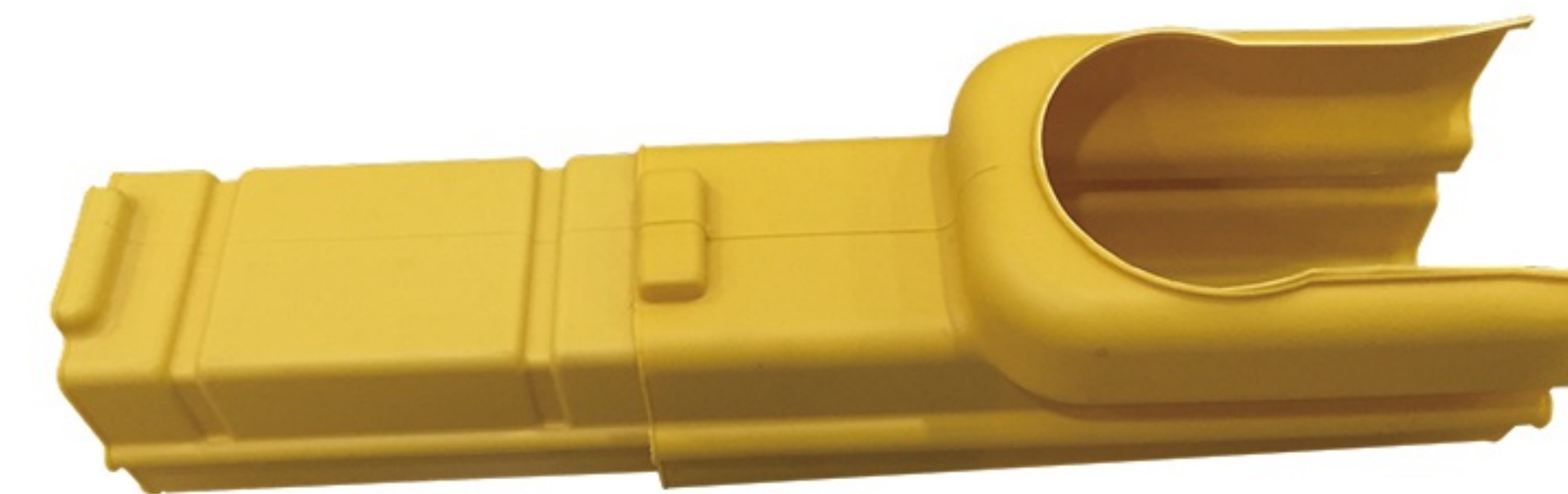
CLASS 3, Use Voltage 26.5kV, Test Voltage 45kV

## Contents

- Excellent electrical insulation (45,000V withstand voltage test passed)
- Acquired flame retardant V-0 rating
- Material that can withstand temperatures over 150°C (TPE)
- Complete interception design of fauna such as algae
- Prevent the fallout from natural disasters such as typhoons by installing locks.

## 45kV Cross-Arm COVER FOR CONSTRUCTION

| Safety Certification 15-AV2BN-0005



## Use

In the construction or electric work, the electric shock hazard caused by the contact of the worker is avoided at the live part of the wire connection and the live part of the human clamp and the equipment is protected for a long period of time from the contact with extraneous materials such as fine dust and algae.

## Size

Height 950mm x Width 210mm

## Type

CLASS 3, Use Voltage 26.5kV, Test Voltage 45kV

## Contents

- Excellent electrical insulation (45,000V withstand voltage test passed)
- Acquired flame retardant V-0 rating
- Material that can withstand temperatures over 150°C (TPE)
- Complete interception design of fauna such as algae
- Locking device prevents natural disasters such as typhoons from falling out

## 45kV Dead-End COVER FOR CONSTRUCTION

| Safety Certification 15-AV2BN-0002



## Use

Prevent the risk of electric shock due to the contact of the operator to the live part of the wire connection and the live part of the human clamp during the construction or the electric work, and to protect the equipment from prolonged contact with extraneous materials such as fine dusts and algae.

## Size

Height 950mm x Width 210mm

## Type

CLASS 3, Use Voltage 26.5kV, Test Voltage 45kV

## Contents

- Excellent electrical insulation (45,000V withstand voltage test passed)
- Acquired flame retardant V-0 rating
- Material that can withstand temperatures over 150°C (TPE)
- Complete interception design of fauna such as algae
- Prevent the fallout from natural disasters such as typhoons by installing locks.

## Indirect COS Cover for Construction

| Safety Certification : 21-AV2BN-0007



## Use

Prevents the risk of electric shock due to worker's contact with the COS of overhead distribution line and the 1st and 2nd lead wires of the transformer during construction (shaft) construction or electrical work, and prevents equipment (It is a protective equipment for construction for indirect live wire work that can protect COS) for a long time.

## Size

Width 800mm x Length 360mm x Height 160mm

## Type

CLASS 3, operating voltage 26.5kV, dielectric strength 45kV

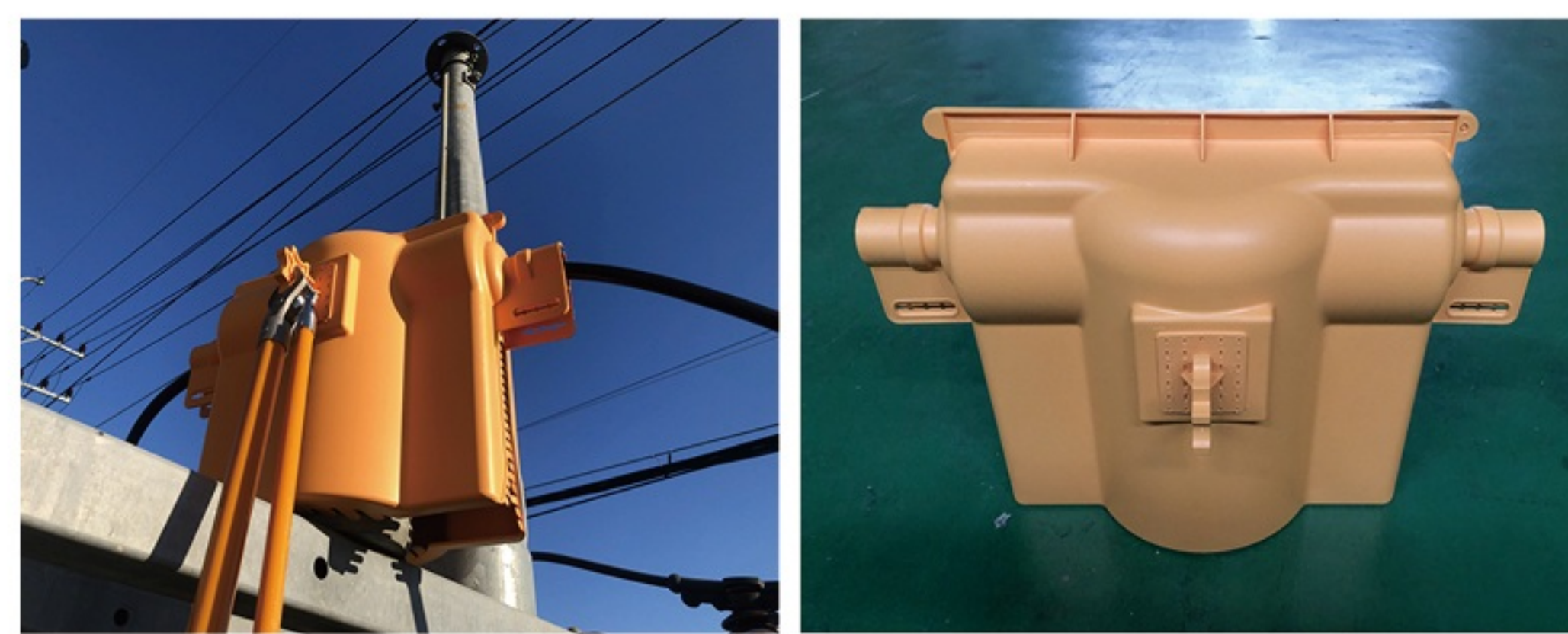
## Contents

- Exclusive cover for bare conductor that can directly protect live parts and can be installed for a long time
- Final fixation with a separate link (safety device) to prevent falling off
- Acquired flame retardant V-0 grade
- Application of material that can withstand high temperatures of 150°C or higher (TPE)
- Compatible with all types of cutout switch equipment, grab stick or grip all clamp stick operation



## Indirect Insulator Cover for Construction

| Safety Certification : 21-AV2BN-0003



## Use

To prevent electric shock or danger due to the approach or contact of workers or work equipment to line post insulators supporting overhead branch lines at construction sites adjacent to overhead distribution lines of 23kV or less, long-term installation by indirect live work during construction Insulation protective equipment

## Size

540mm wide x 270mm long x 370mm high

## Type

CLASS 3, operating voltage 26.5kV, dielectric strength 45kV

## Contents

- Exclusive cover for bare conductor that can directly protect live parts and can be installed for a long time
- Excellent electrical insulation (passed 45,000V withstand voltage test)
- Application of material that can withstand high temperatures of 150°C or higher (TPE)
- Compatible with all types of LP insulators, manipulated with grab sticks or grip all clamp sticks

## Indirect Bushing Cover for Construction

| Safety Certification : 21-AV2BN-0006



## Use

Indirect live wire work during the construction period to prevent electric shock or danger due to the approach or contact of workers or work equipment to the pole transformer bushing attached to the upper part of the pole transformer at a construction site adjacent to an overhead distribution line of 23kV or less. Insulation protective equipment installed for a long time

## Size

210mm wide x 210mm long x 400mm high

## Type

CLASS 3, operating voltage 26.5kV, dielectric strength 45kV

## Contents

- Exclusive cover for bare conductor that can directly protect live parts and can be installed for a long time
- The opening is of a sliding type, so it is easy to install, and it is fixed with a separate hook and fixing clip.
- Long-term protection of the upper bushing of the pole transformer, operated with a grab stick or a grip all clamp stick

## Indirect Branch Cover for Construction

| Safety Certification : 21-AV2BN-0005



## Use

To prevent electric shock or danger due to the approach or contact of workers or work equipment to the branch sleeves and branch rings that branch to the COS primary down-line or the pole-phase transformer primary down-line at a construction site adjacent to an overhead distribution line of 23 kV or less. It is an insulating protective device installed for a long period of time by indirect live wire work during the construction period.

## Size

Width 300mm x Length 350mm x Height 60mm

## Type

CLASS 3, operating voltage 26.5kV, dielectric strength 45kV

## Contents

- Acquired flame retardant V-0 grade
- Fixed with a separate fixing clip
- Application of material that can withstand high temperatures of 150°C or higher (TPE)
- Branch hook cover, branch (straight) sleeve cover protection, operated with grab stick or grip all clamp stick

## Indirect LA Cover for Construction

| Safety Certification : 21-AV2BN-0004



## Use

Prevents the risk of electric shock due to worker's contact with the LA (light arrester) that supports overhead wires in overhead distribution lines during construction (axis) construction or electrical work of 23kV or less, and contact with external objects such as fine dust or algae It is a protective equipment for indirect live wire work that can protect equipment for a long period of time from

## Size

Width 120mm x Length 120mm x Height 500mm

## Type

CLASS 3, operating voltage 26.5kV, dielectric strength 45kV

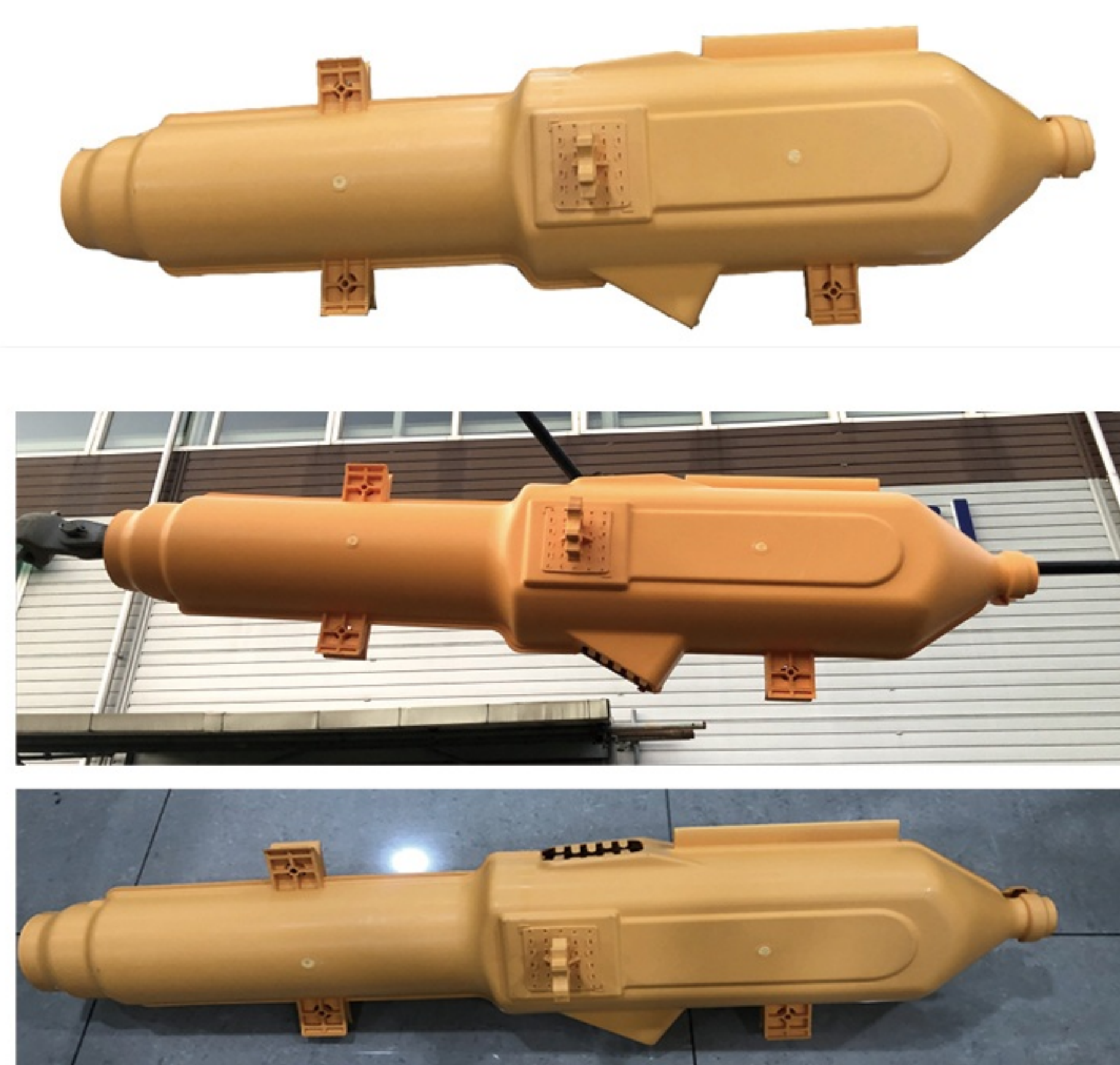
## Contents

- Acquired flame retardant V-0 grade
- The opening is of a sliding type, so it is easy to install, and it is fixed with a separate hook and fixing clip.
- Application of material that can withstand high temperatures of 150°C or higher (TPE)
- All types of polymer, magnetic arrester protection possible,



## Indirect Dead-End Cover A for Construction

| Safety Certification : 21-AV2BN-0008



## Use

Prevents the risk of electric shock due to worker's contact with the polymer suspension insulator at the wire connection point and the live part of the human clamp (including the spherical insulating cover) during construction (axis) construction or electrical work, and It is a protective equipment for indirect work that can protect equipment for a long period of time from contact with the same external objects.

## Size

Width 930mm x Length 205mm x Height 205mm

## Type

CLASS 3, operating voltage 26.5kV, dielectric strength 45kV

## Contents

- Exclusive cover for bare conductor that can directly protect live parts and can be installed for a long time
- Acquired flame retardant V-0 grade
- Easy installation by one-touch fastening of 3 hooks with a hand stick after installation
- Application of material that can withstand high temperatures of 150°C or higher (TPE)
- For protection of suspension insulators equipped with polymer suspension insulators and spherical human clamp covers

## Indirect Joint Cable Head Cover for Construction

| Safety Certification : 21-AV2BN-0002



## Use

During construction (axis) construction or electrical work, it prevents the risk of electric shock due to worker's contact with the standing cable head used for overhead power distribution lines and underground entry points near substations, and prevents particles from contacting foreign objects such as fine dust or algae. It is a protective device for construction or live wire work that can protect the upper part of the cable head and the insulation cover for a long period of time.

## Type

CLASS 3, Use Voltage 26.5kV, Test Voltage 45kV

## Contents

- Exclusive cover for bare conductor that can directly protect live parts and can be installed for a long time
- Excellent electrical insulation (passed 45,000V withstand voltage test)
- Acquired flame retardant V-0 grade
- Application of material that can withstand high temperatures of 150°C or higher (TPE)
- All types of cable head & insulation cover can be protected (38SQ, 60SQ, 325SQ) , 600SQ)

## Size

Diameter 220mm x Height 463mm

## Indirect Bypass Cable Clamp Cover

| Safety Certification : 21-AV2BN-0001



## Use

Prevents the risk of electric shock due to worker's contact with the part where the high-voltage riser cable or bypass cable is connected to the extra-high voltage line of the overhead distribution line during electrical work, and the clamp connection part is under construction from contact with external objects such as fine dust or algae. Protective equipment for live wire work that can protect against .

## Type

CLASS 3, Use Voltage 26.5kV, Test Voltage 45kV

## Contents

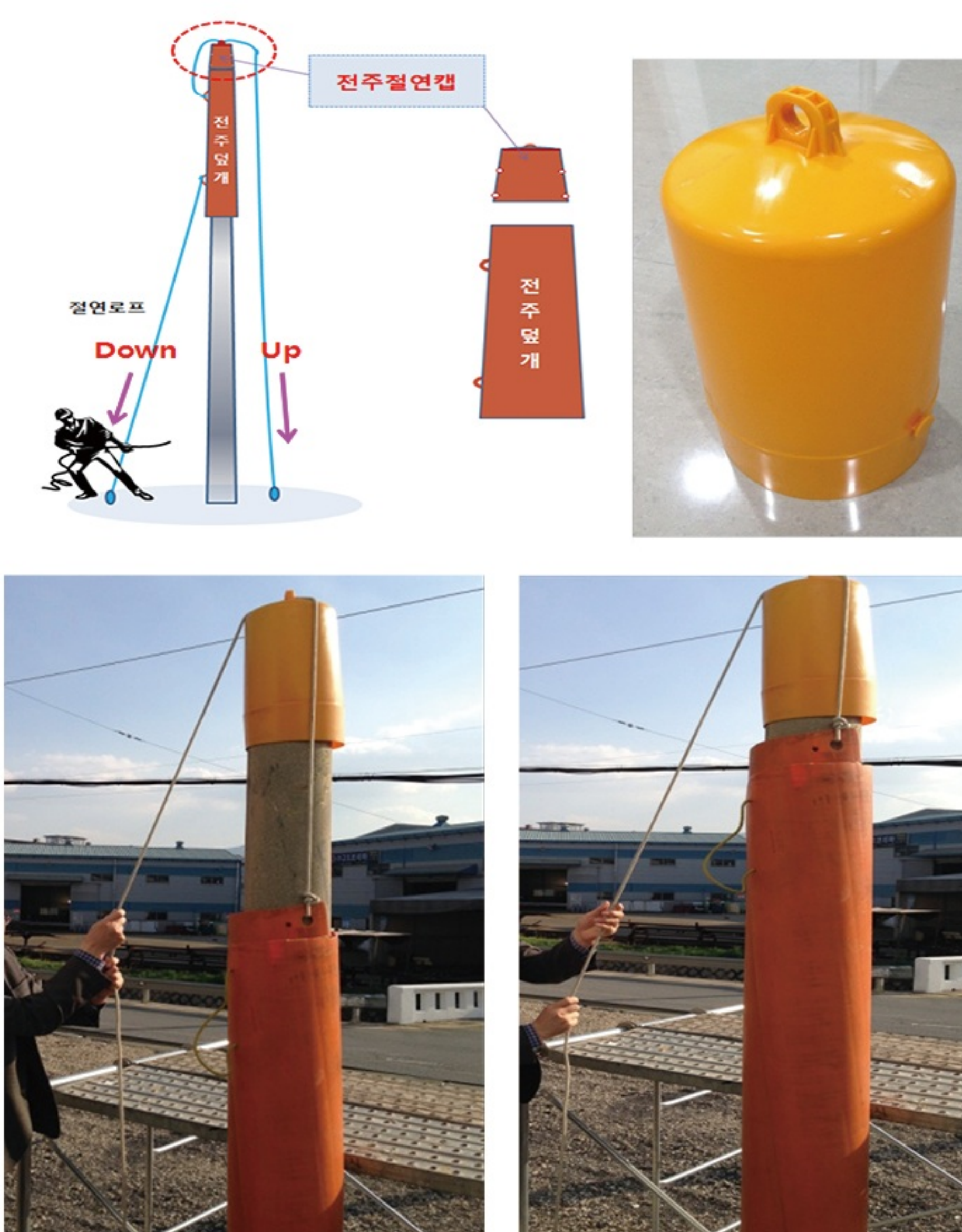
- Exclusive cover for bare conductor that can directly protect live parts and can be installed for a long time
- Excellent electrical insulation (passed 45,000V withstand voltage test)
- Acquired flame retardant V-0 grade
- Application of material that can withstand high temperatures of 150°C or higher (TPE)
- Compatible with all types of cable clamps for indirect work (ring type, temporary hanging type, rotating type)

## Size

240mm x 238mm x 477mm

## Pole Top Cover

| Safety Certification : 19-AV2BN-0015



## Use

To the insulation protection of the long pole circumference by the conventional pole cover, the complete protection of the end portion of the pole where the new pole comes into contact and fixing or supporting the existing pole cover to the pole.

## Size

Height 400mm x Diameter 210mm

## Type

CLASS 3, Use Voltage 26.5kV, Dielectric Strength 30kV

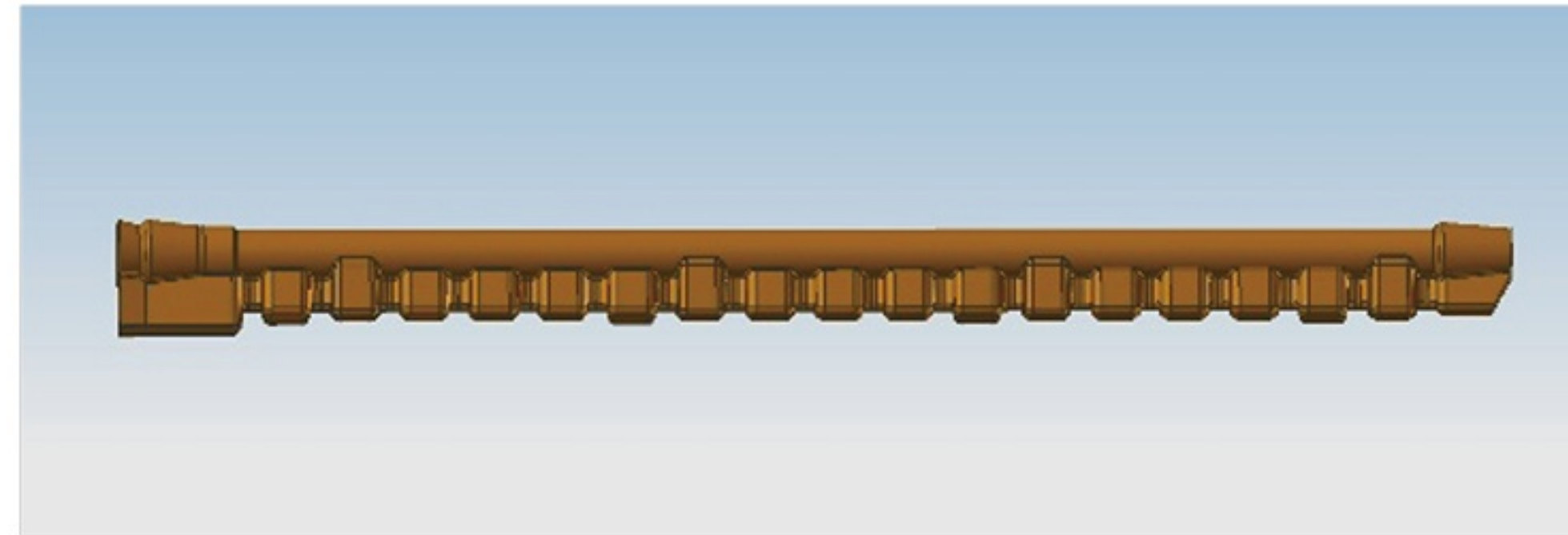
## Contents

- Protects all types of concrete poles
- Excellent electrical insulation (45,000V withstand voltage test passed)
- HOOK on the side, it can be fixed with existing pole cover, excellent workability
- It is possible to fix the insulation rope through the upper protruding collar, thus enabling the pole cover to move up and down.



## Conductor Cover

| Safety Certification 11-AV2BN-0002 (3class) / 19-AV2BN-0003 (4class)



### Use

- Insulation cover used for electric wires to prevent any safety accidents when the operator touches the wires
- High-pressure supplier essential equipment (16 per company)

### Size

O.D 86mm X L 1,520mm

### Type

CLASS 3, 26.5kV (Class 4, 36.0kV)

### Contents

- Excellent removability during live wire work (soft material application, detachable optimum design)
- Designed for excellent resilience (HDPE material)
- Dead end cover and insulator cover interchangeable

## Cross Arm Cover

| Safety Certification 11-AV2BN-0001



Entire Product Assembled

### Use

Apparatus to cover the cross arm to prevent the contact with the cross arm when installing or removing binding wires in Live-Wire work Required equipment for high-tension work subcontractor (4 units per subcontractor)

### Type

CLASS 3, 26.5kV

### Standard

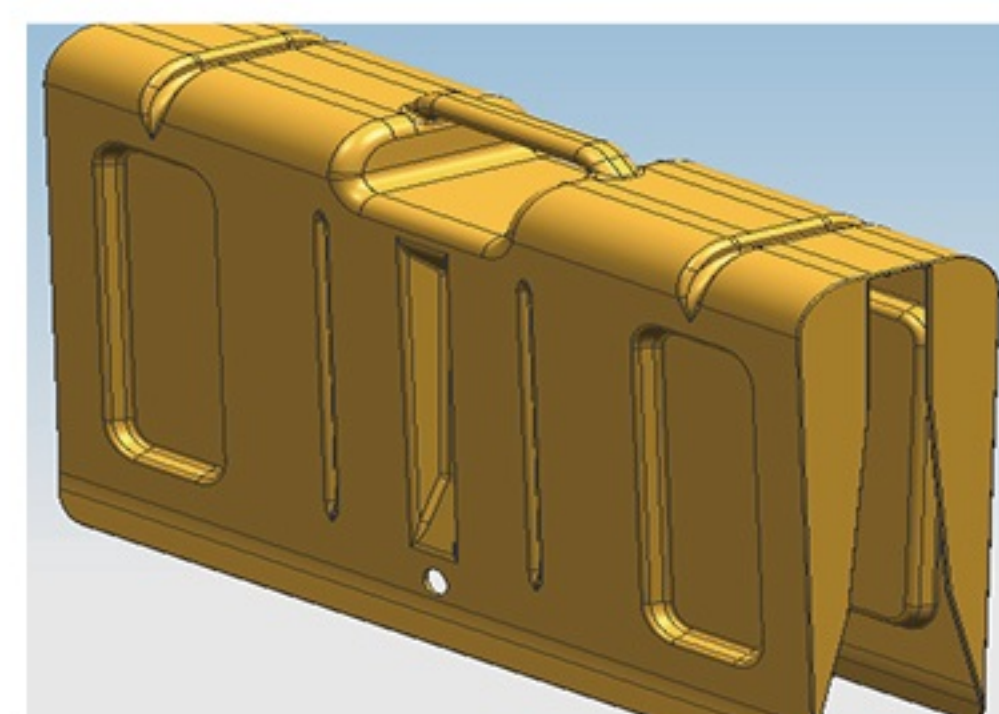
Test Voltage : Insulation Strength 24.0kv, Dielectric Strength 25.0kv

### Size

External Diameter 205mm X Length 560mm

## COS(Cut-out Switch) Cover

| Safety Certification : 12-AV2BN-0015



### Use

Replacement of COS and transformer primary lead wires to distribution lines below 36kV. It is possible to prevent contact with the operator's COS at the time of work, Installed in locations where there is a risk of electric shock due to line contact.

### Size

Height 450mm x Length 730 mm x Width 150mm

### Type

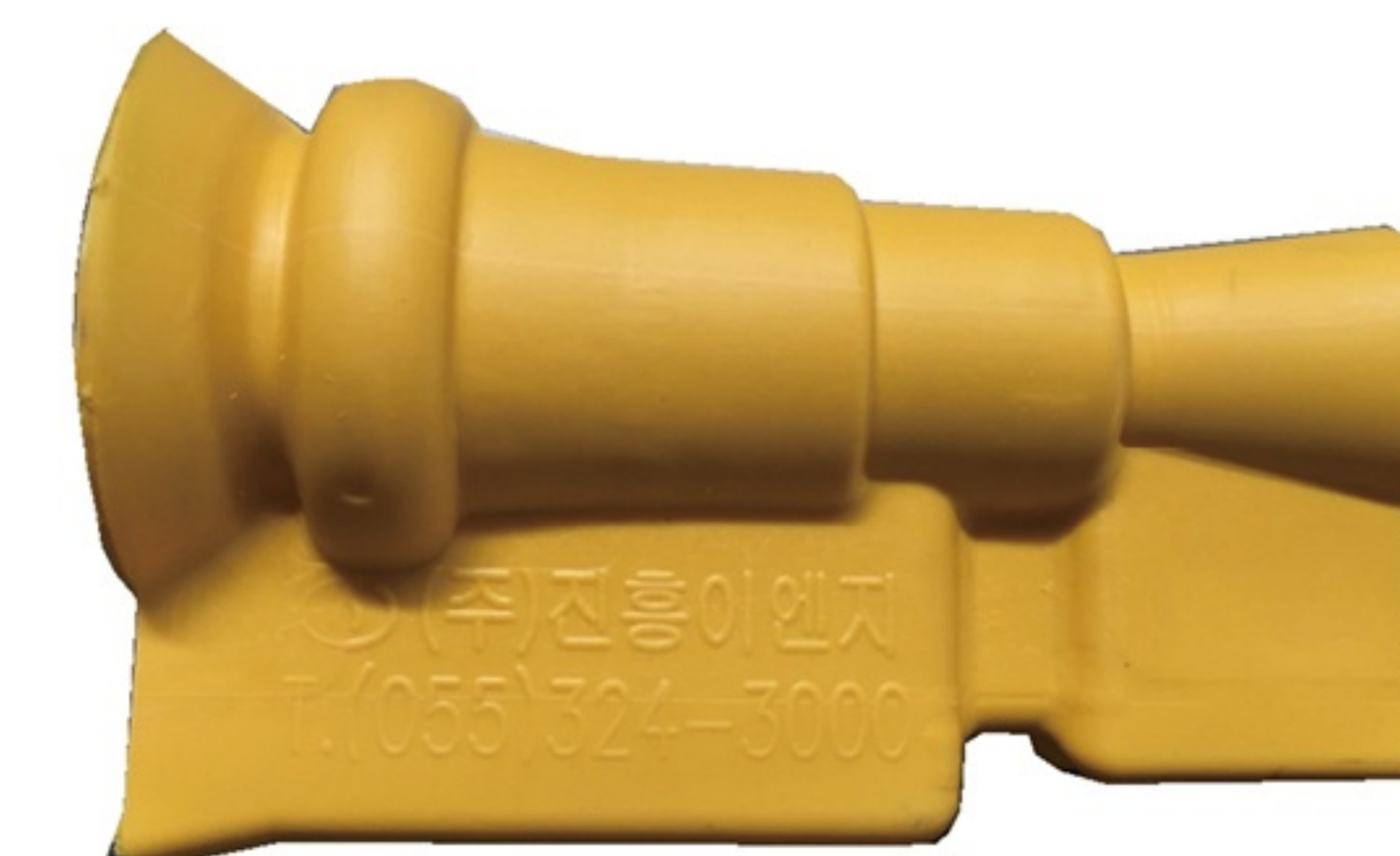
CLASS 3, 26.5kV

### Contents

- Full protection and installation of all COS standards (polymer COS)
- Creates left and right wings to block leakage current from charging area
- Handle instead of indirect work adapter for workability
- Superior electrical insulation, flexible and high mechanical strength

## Insulation hose for Construction Connector

| Safety Certification : 14-AV2BN-0003



### Use

To prevent accidents caused by contact with overhead distribution lines of 45kV or less Protection for combining the building protection pipe and the insulator cover (dead end cover) pipe connector protection.

### Size

OD 134mm X H 234mm

### Type

CLASS 3, Use Voltage 26.5kV, Test Voltage 45kV

### Contents

- 25kV construction cover & 45kV construction cover compatible
- Application of TPE material which is flexible and can withstand high temperature (150°C)
- Compatible with import, domestic insulator cover, dead end cover



## Insulator Cover

| Safety Certification 11-AV2BN-0005



Entire Product Assembled

**Use** To protect the charging unit in pin insulator and LP insulator on the overhead electric line of 25kV and less. Required equipment for high tension work subcontractor (8 units per subcontractor)

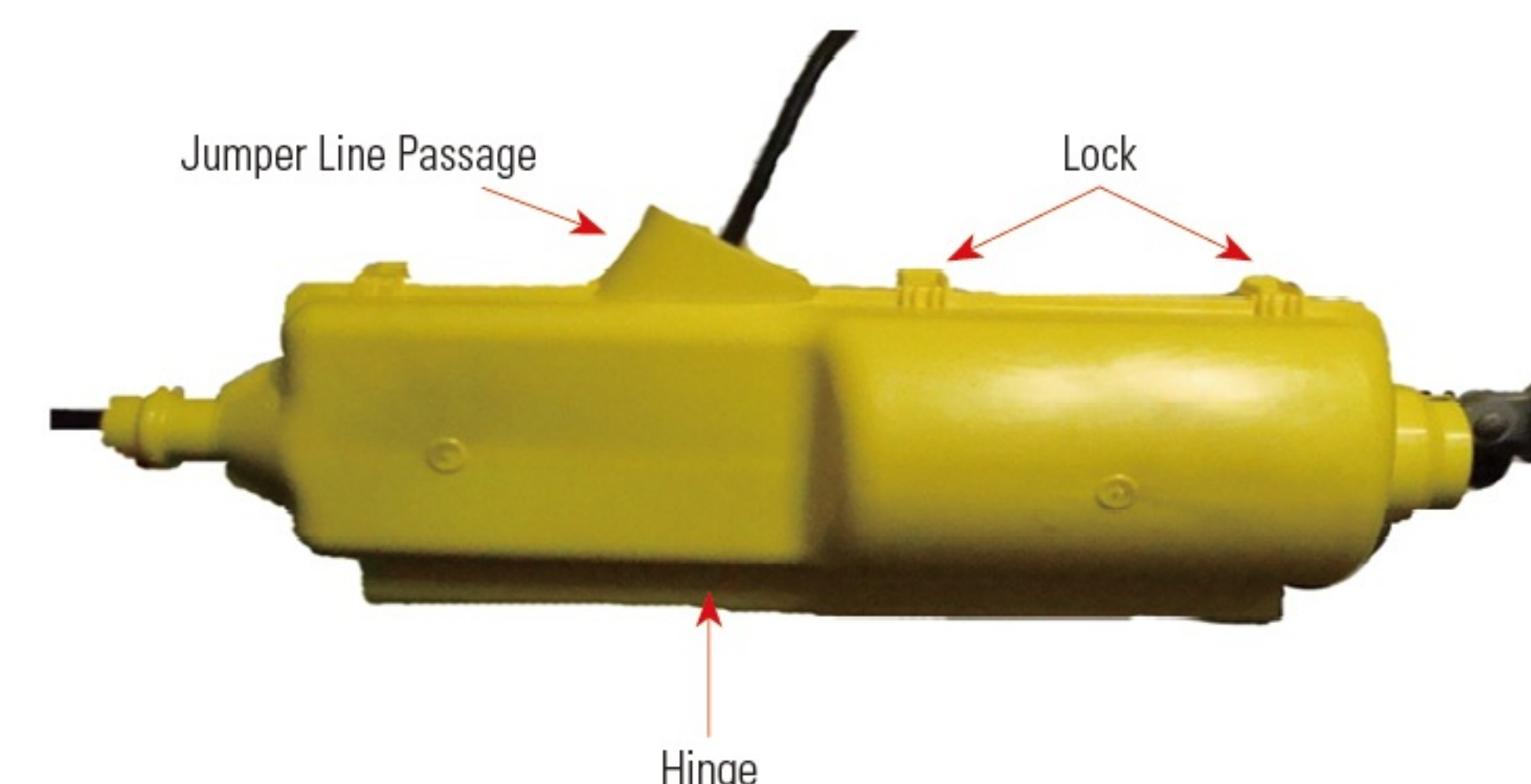
**Type** CLASS 3, 26.5kV

**Standard** Test Voltage : Insulation Strength 24.0kv, Dielectric Strength 25.0kv

**Size** External Diameter 220mm X Length 946mm

## Multi-Purpose Dead End Cover

| Safety Certification 11-AV2BN-0006



### Use

Multi-purpose dead end cover for Live-Wire work, commonly used for both porcelain and polymer suspension insulator, to protect the charging unit in suspension insulator and dead end clamp (including insulating cover) Required equipment for high-tension work subcontractor (12 units per subcontractor)

### Size

External Diameter 220mm X Length 946mm

### Type

3class, 26.5kV

### Standard

Test Voltage : Insulation Strength 24.0kv, Dielectric Strength 25.0kv



Polymer Insulator



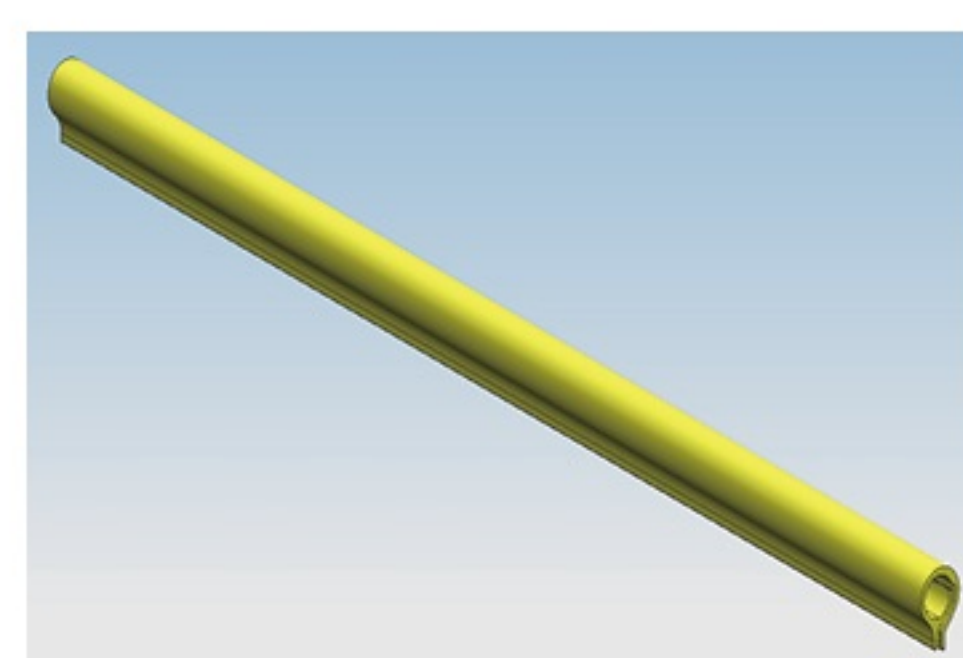
Porcelain Insulator



Applicable for both polymer insulator and porcelain insulator to protect the entire charging unit completely

## 45kV LINE HOSE

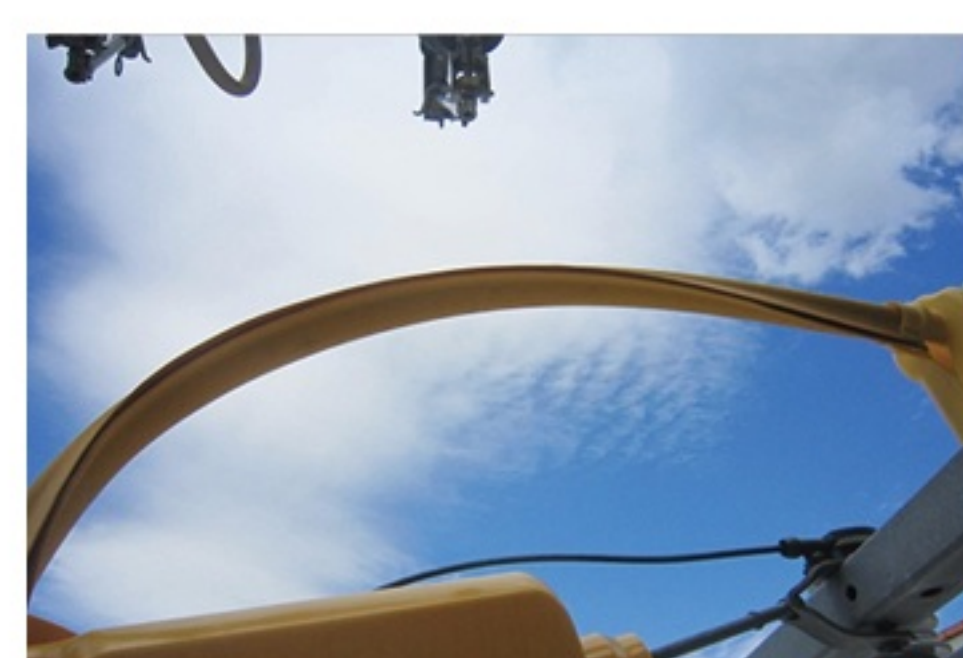
| Safety Certification : 14-AV2BN-0006



PICTURES



SITE INSTALLATION



SITE INSTALLATION

### Use

Damage to electric shock or line due to approach or contact with power distribution line. An insulation guard, which temporarily installs in dangerous places,

### Size

I.D. 38mm x Length 2,000mm

### Type

CLASS 3, Use Voltage 26.5kV, Dielectirc Strength 30kV

### Contents

- TPE material flexible and withstand high temperature (150°C)
- It can be mounted on all standard wire.
- Excellent electrical insulation (45kV withstand V test passed)
- 22.9kV-y Protection of curved parts such as jumper wire, transformer lead wire, etc.

## POLE COVER

| Safety Certification : 16-AV2BN-0001



### Use

The insulation cover, which is installed in the place of pole during the entry into the distribution line and replacement of the pole to prevent the worker's approach or electric shock due to line contact.

### Size

I.D. 250mm x Length 1,710mm

### Type

CLASS 3, 26.5kV

### Contents

- In order to improve the workability during the occupancy work,
- Easy to slide up and down after mounting on pole
- Superior electrical insulation, flexible and high mechanical strength
- Excellent in elasticity and easy to install on pole.



## Rubber Insulating Blanket

| Safety Certification 12-AV2BN-0018



### Use

Insulation guard for use in places is a possibility of electric shock due to short-circuit accident and live wire or grounded conductor and worker's contact during live wire operation

### Size

Width 910mm x Length 910 mm x Thickness 3.5mm

### Type

CLASS 3, 26.5kV

### Weight

3.8kg

### Contents

- A rubber plate that is very handy for inserting dangerous charge areas to workers
- A multipurpose insulated enclosure that can be folded or enclosed to suit your environment.
- Exceptional electrical insulation and smell-free grade rubber
- Roll type, special type, etc. Manufactural

## Insulation Hose for Construction

| Safety Certification : 19-AV2BN-0012



**Use** Access to distribution lines at construction sites or railway lines If there is a risk of electric shock or damage to the lines It is an insulation protection for long-term installation.

**Size** Inner 36mm x Length 2,000mm

**Type** CLASS 4, 36.0kV(Use Voltage), 34KV(Test Voltage)

### Contents

- Korea Occupational Safety & Health Safety Certification
- Application of wave shape on wing (patent application) Connector type integrated type
- Improvement of insulation and weight reduction
- Connection pipe material TPE material
- Dissolution property, heat resistance improvement
- Mainly used for railway railway lines
- Heat temperature over 150°C. (KERI)

## Overhead earth wire Support Cover

| Safety Certification : 17-AV2BN-0016



### Use

In the case of electrical construction, The risk of electric shock from contact with the operator in the area of the working line support. From outside contact, such as feces, such as fine dust or algae, Construction protective cover for long-term protection of ash.

### Size

outer 390mm x length 1,060mm

### Type

CLASS 3, 26.5kV

### Contents

- 3-Point Hook structure that can be fixed in place after installation
- Structure of lower support band and complete protection structure
- Material with excellent electrical insulation and excellent mechanical strength
- Separate handles for easy workability and mobility
- Satisfies 45,000V of dielectric strength and has tracking resistance

## Poletype Transformer Bushing Cover

| Safety Certification : 17-AV2BN-0017



### Use

During the electrical work, the bending portion of the pillar transformer in the processing distribution line. Prevent the risk of electric shock caused by contact with workers, and reduce dusts such as fine dusts and algae. For long-term protection of bushings from external contact such as

### Size

Outer 170mm x Length 350mm

### Type

CLASS 3, 26.5kV

### Contents

- Can protect the live part directly and can be installed for a long time
- Locking device prevents natural disasters such as typhoons from falling out
- Material that can withstand high temperatures over 150°C (TPE)
- Horizontal pattern design for easy grip and insulation
- It has 45,000V of insulation strength, tracking resistance and vertical flame retardancy (v-0)